



MONTHLY MEMBERSHIP PROGRESS REPORT

District 325B1

Results as of: 9/30/2015

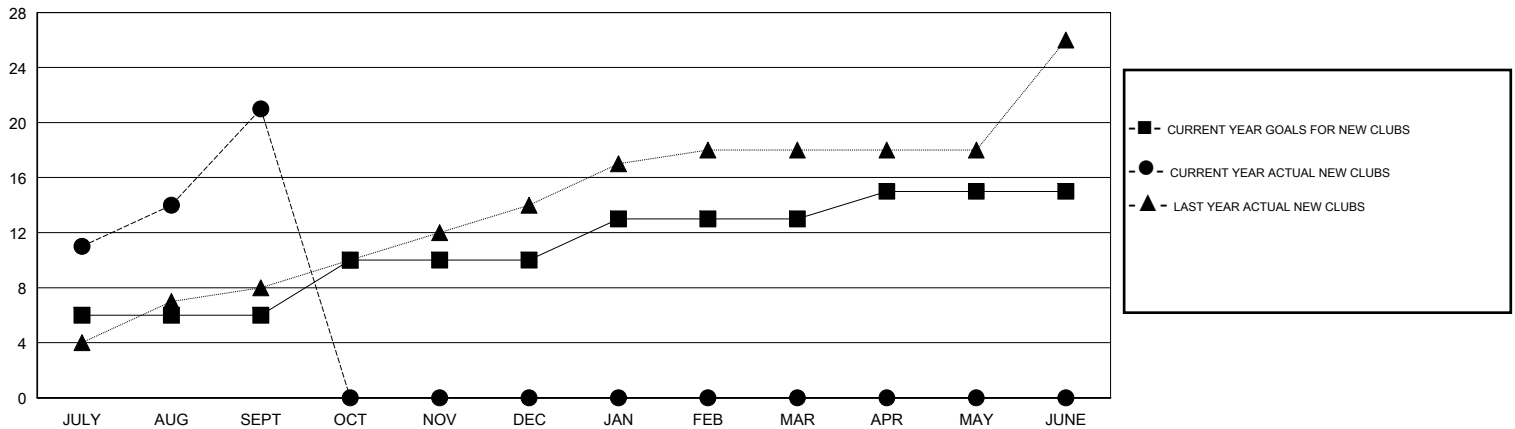
GMT: NAZMUL HAQUE

LOCATION NEPAL

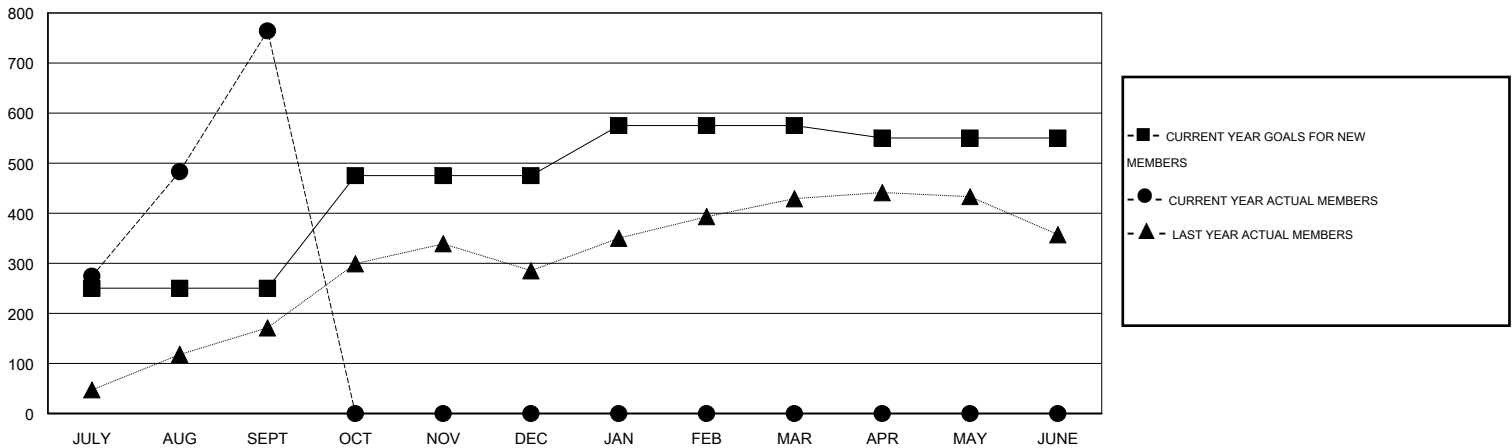
GMT CA 6

Clubs					Members				
RESULTS FOR 2015-2016					RESULTS FOR 2015-2016				
QUARTER	NEW CLUB GOAL	NEW CLUBS	DROPPED CLUBS	NET GAIN/LOSS	QUARTER	NEW MEMBER GOAL	CHARTER AND NEW MEMBERS ADDED	DROPPED MEMBERS	NET GAIN/LOSS
JULY/AUG/SEPT	6	21	0	21	JULY/AUG/SEPT	250	1,064	300	764
OCT/NOV/DEC	4	0	0	0	OCT/NOV/DEC	225	0	0	0
JAN/FEB/MAR	3	0	0	0	JAN/FEB/MAR	100	0	0	0
APR/MAY/JUNE	2	0	0	0	APR/MAY/JUNE	-25	0	0	0

GOALS AND ACTUAL NEW CLUBS CUMULATIVE



GOALS AND ACTUAL MEMBERS CUMULATIVE



DROPPED CLUBS: 0	112 CLUBS OF 190 ADDED 1 OR MORE NEW MEMBERS	<u>GENDER DISTRIBUTION</u>			
<u>DROPPED MEMBERS</u>		MALE	4,624 (82.10%)		
DECEASED	1	FEMALE	1,008 (17.90%)		
CLUB CANCELLED	0	CLICK HERE FOR HEALTH ASSESSMENT DATA			
OTHER	299			FAMILY UNIT MEMBERS	3,064
TOTAL	300			HEAD OF HOUSEHOLD	1,116
		NON-HEAD OF HOUSEHOLD	1,948		